



## The benefits of softened water...

Over 50% reduction in the use of shampoos, soaps, conditioners & cleaning products.

Lower heating bills.

Your glassware will sparkle & plates will shine.

Experience the softer feeling of your clothes & towels.

Your heating systems around your home will become more efficient.

Luxurious soap lather and double the amount of bubble bath suds.

Cleaning time around the home will be dramatically reduced.



### MT600

#### Specification

Height	550mm	(21 5/8")
Depth (inc. hoses)	476mm	(18 3/4")
Width	277mm	(10 7/8")
Capacity @ 21° Clark	2,727 ltrs	(600 gallons)
Salt used per regeneration	2.1kg	(4.6 lbs)
Power	LR 20 Alkaline Batteries (x2) Size D	
Valve type	Cappers	
Water pressure	Min 1.7 bar - Max 5 bar	
Family size	1-8 people	



#### Flow rates

Standard Fitting Kit	11 ltrs
15mm Rigid plumbed	27 ltrs
22mm Hi-Flow Kit	45 ltrs

### MT300

#### Specification

Height	460mm	(18 1/8")
Depth (inc. hoses)	476mm	(18 3/4")
Width	277mm	(10 7/8")
Capacity @ 21° Clark	1,341 ltrs	(300 gallons)
Salt used per regeneration	1kg	(2.2 lbs)
Power	LR 20 Alkaline Batteries (x2) Size D	
Valve type	Cappers	
Water pressure	Min 1.7 bar - Max 5 bar	
Family size	1-3 people	



#### Flow rates

Standard Fitting Kit	11 ltrs
15mm Rigid plumbed	23 ltrs
22mm Hi-Flow Kit	40 ltrs

All TOUCAN™ models require an overflow and drain accessible to the point of installation.

### IAN HOLMES

#### Water Softener Services



Bunbury, Bridge Street, Gt. Bardfield,  
Braintree, Essex. CM7 4SY

Tel: 01371 810406

[www.ianholmeswatersofteners.co.uk](http://www.ianholmeswatersofteners.co.uk)

Manufactured in Britain

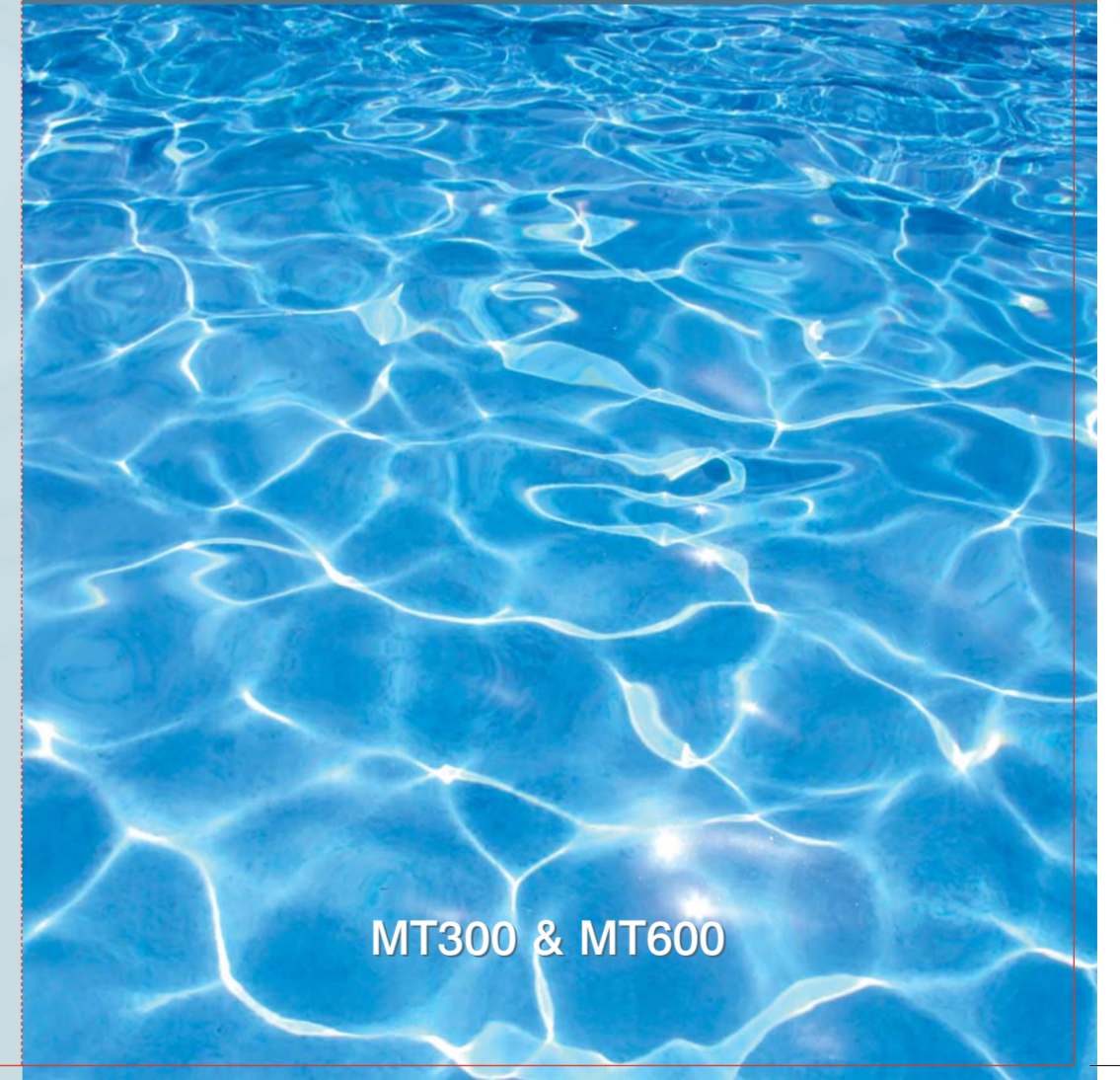


In the interest of product development we reserve the right to alter specification without prior notice.  
Issue: 01/2011

# TOUCAN™

## Non Electric Water Softeners

Experience  
the benefits of  
softened water...



MT300 & MT600

**WARNING**

This artwork has been re-set  
Please check everything carefully  
Thank you

## What is 'Hard' water?

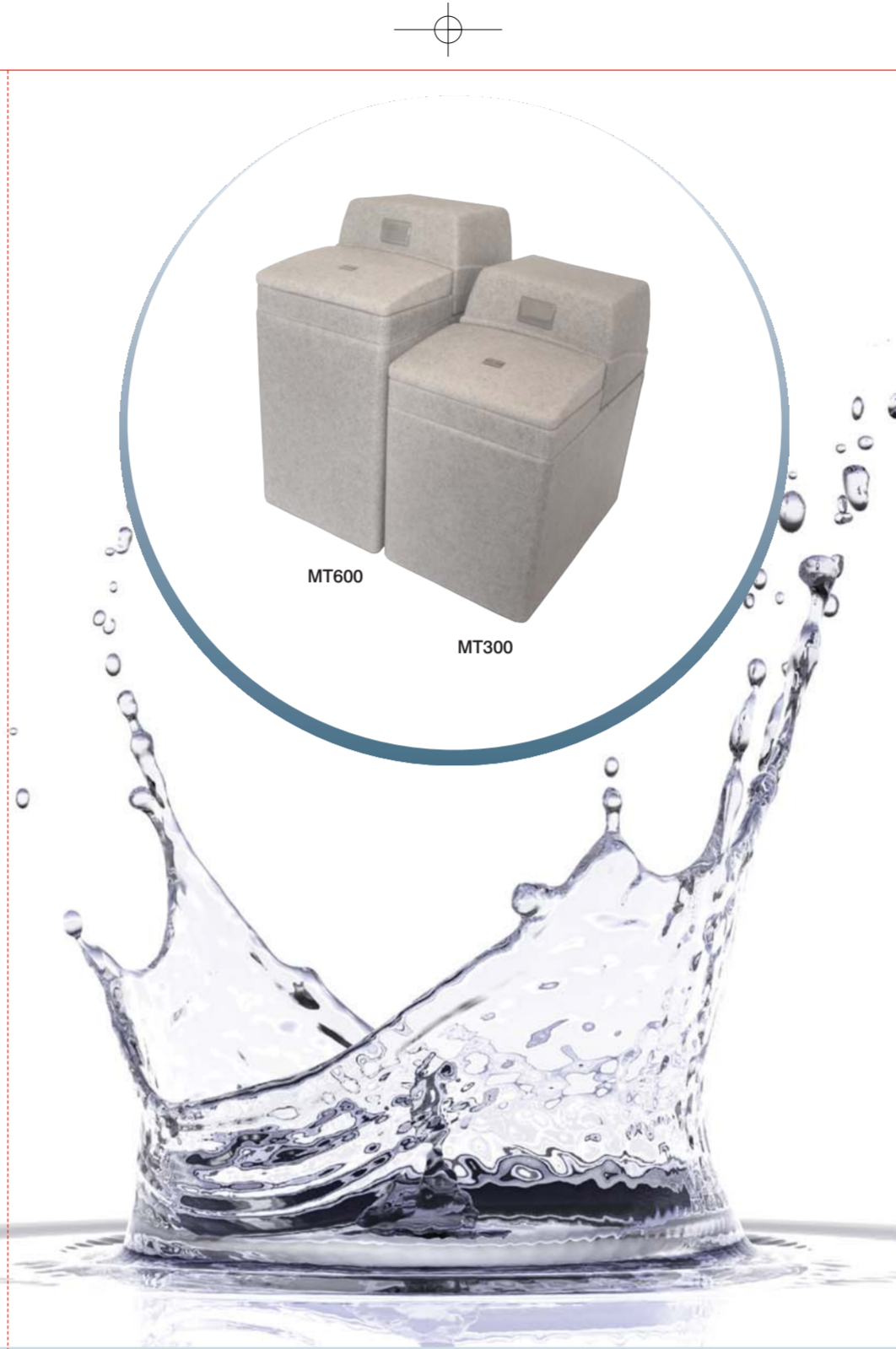
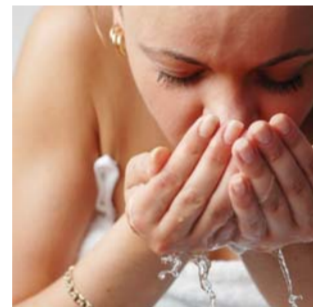
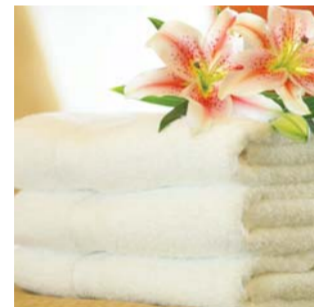
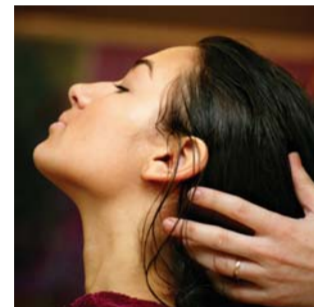
Rain water is naturally "soft" but when rain water falls on calcium, chalk, limestone or any other soft rock formation, it is the minerals within these rocks that dissolve into the water, giving you hard water around your home. Over 60% of households in the UK suffer from the effects of hard water.



Cross section of a scaled hot water pipe.

**HARD WATER AREAS**  
KEY:

- Soft water
- Hard water
- Very Hard water



## How a TOUCAN™ water softener works...

A water softener works by forcing hard water into a tank of millions of tiny beads of special resin. As the hard water passes over the beads a process known as ion exchange occurs and this causes the water to become soft. After a while (how long depends on the hardness of your water and the number of people in the house) the resin becomes exhausted and has to be regenerated. This is achieved by flushing the resin with salt water, a process known as regeneration. The salt water solution is washed away to drain and does not enter the household water supply. This approach is common to all water softeners but it's how each manufacturer goes about it that separates the best from the merely average.

### Cappers

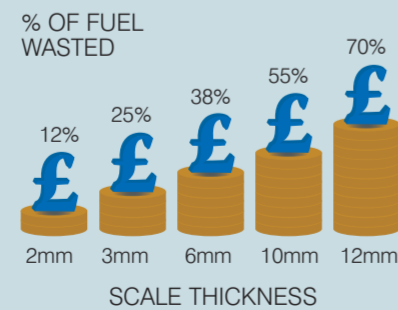


- Cappers Non Electric Valve.
- Low profile.
- The control valves works with two LR 20 (Size D) alkaline batteries.
- 5 digit display for easy reading.
- The control requires no external power supply. Significant time saving during installation. Requires a battery change on average every two years.
- Blending valve fitted as standard.
- Conforms to CE low voltage regulations.

## The Cost...

Hard water scales up your hot water tanks, pipes, washing machines and heating systems. Government figures show that an amazing 38% loss in heating efficiency will occur with just 6mm of scale build up within an average family home heating system.

It is not too late to install a Toucan™ water softener. Once you have, it will start to dissolve any existing scale and more importantly it will prevent any future scale build up!



## The Range...

The MT600 & MT300 have been designed to be the most compact water softeners on the market today. The MT600 will produce \*600 gallons of softened water between each regeneration cycle and will easily accommodate a family of up to 8 people.

However if your family is slightly smaller, our MT300 model may be the best option, its capacity (\*300 gallons) is perfectly suited for families of 1-3 people.

For both models, the superior performance is achieved by the careful design of its high capacity resin vessel and by the use of finer, more efficient resin. You see, we spend more money buying the best resin so that you save money by using less salt! The result is more softened water for every kilogram of salt used.

\*@ 21° Clark hardness

## The Valve... No electrics required

All of our Toucan™ models have a sophisticated metered control valve that takes care of all the machines functions completely automatically.

The innovative design of the Cappers control valve has enabled us to reduce the height of our standard water softener by 75mm. This, coupled with no longer relying on an electrical supply, means that the MT range of water softeners can be fitted in spaces previously unsuitable for water softener installations.

The circuit board has two safety parameters regarding the alkaline batteries. The first one is an indicator on the display when the batteries need changing. The second is to not allow the unit to regenerate unless the batteries have enough power to complete all of the regeneration cycles.